

Volatility Tracker

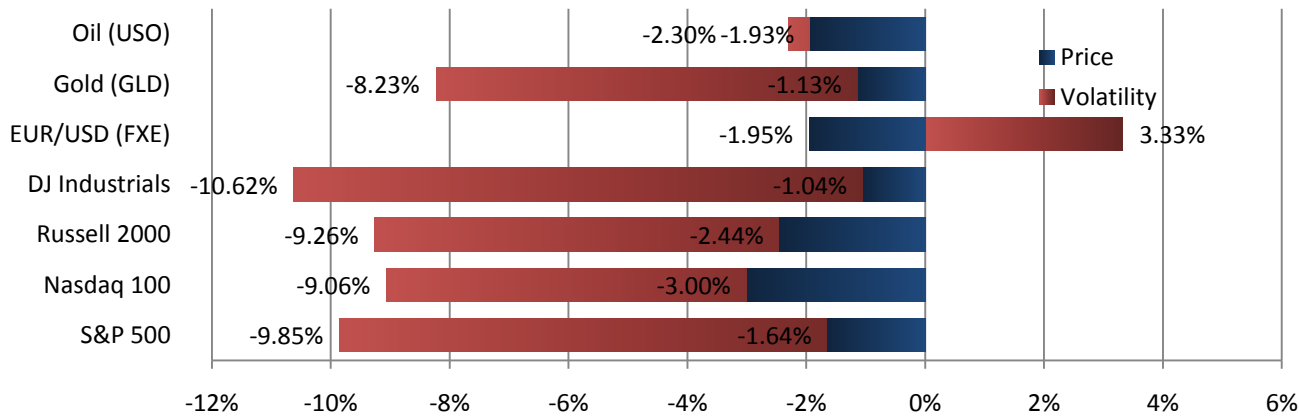
1. Comment

This week saw realized volatility rise to meet last week's spike in implied levels, although as I mentioned those spot implied levels weren't easily sustainable. [2] I'm not the world's greatest proponent of technical analysis, but the price charts for equities and oil deserve a look. Failure to revert toward recent averages would be further confirmation of the ill health of this market. [4,15]

With a less than one-point range over the past two weeks, the VIX futures term structure has only been this flat three times in the past year, and never two weeks in a row.[7] The relationship between current implied and recent realized volatility is such that options look fairly priced which, again, hasn't been the case since early 2009. [6,8]

It may be worth considering some long gamma exposure to gold at these levels. [11,13]

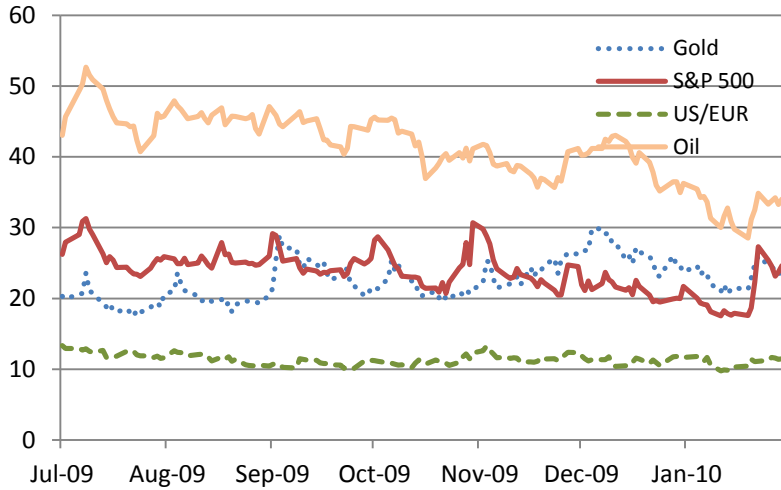
2. Weekly Change - Stock, Commodity, and Volatility Indexes



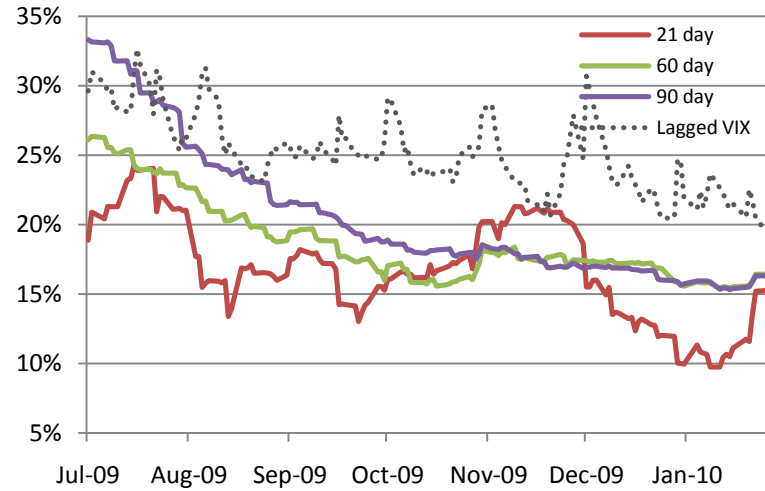
	S&P 500	Nasdaq 100	Russell 2000	DJ Industrials	EUR/USD (FXE)	Gold (GLD)	Oil (USO)
■ Price	-1.64%	-3.00%	-2.44%	-1.04%	-1.95%	-1.13%	-1.93%
■ Volatility	-9.85%	-9.06%	-9.26%	-10.62%	3.33%	-8.23%	-2.30%

Implied Daily Move (1σ)		
	Points +/-	%
SPX	16.65	1.55%
NDX	28.30	1.63%
RUT	10.63	1.77%
DJIA	137.17	1.36%
US/EUR	1.00	0.72%
Gold	1.59	1.50%
Oil	0.76	2.14%
Forward Bias		
	Price	Volatility
SPX	↑	↓
EUR/US	↓	→
Gold	↗	→
Oil	↗	↗

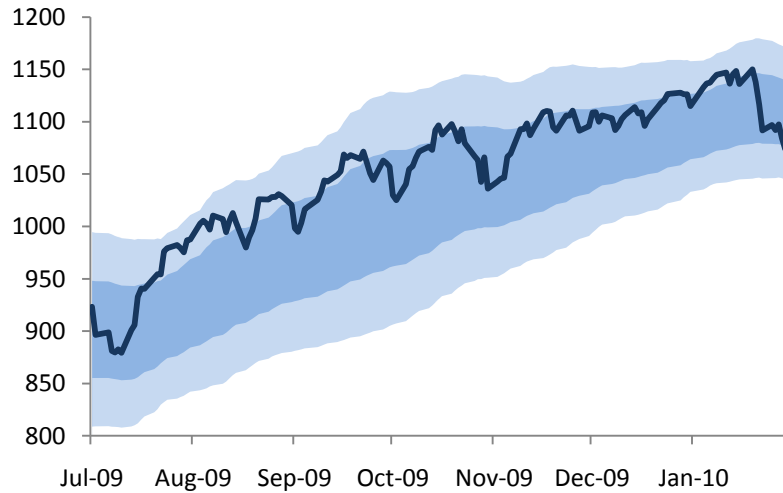
3. Implied Volatility Indexes



5. S&P 500 Implied and Realized Volatility



4. S&P 500 Price and Bollinger Bands

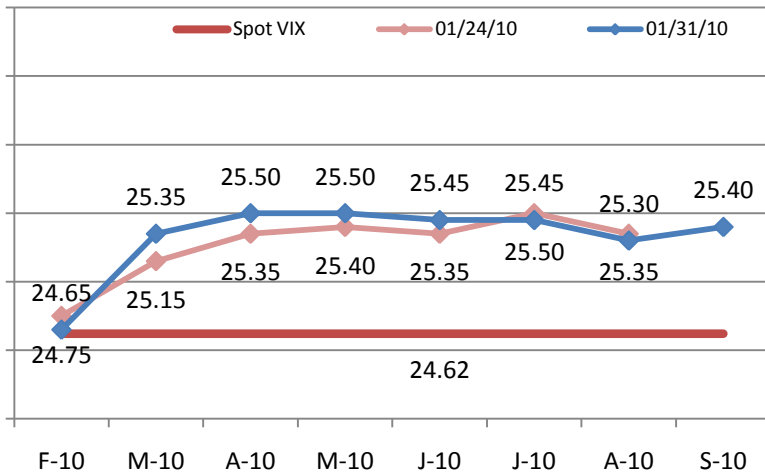


6. S&P 500 Implied/Realized Volatility Ratio

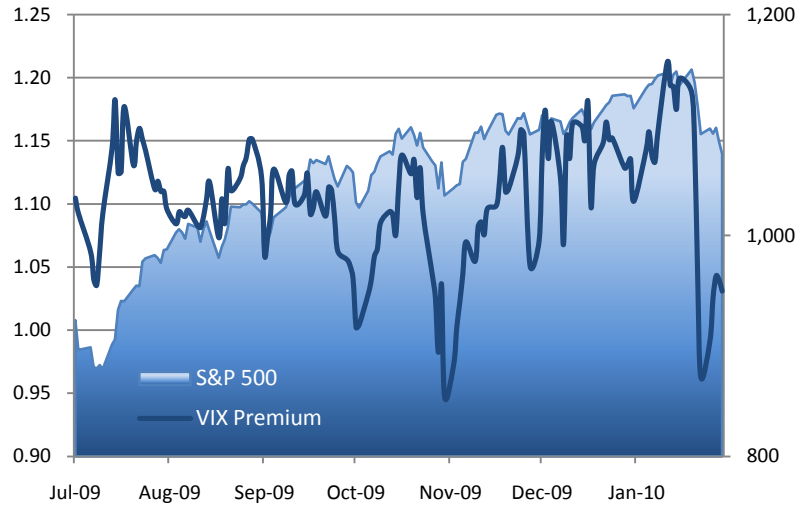


2/1/2010
 Volatility Tracker

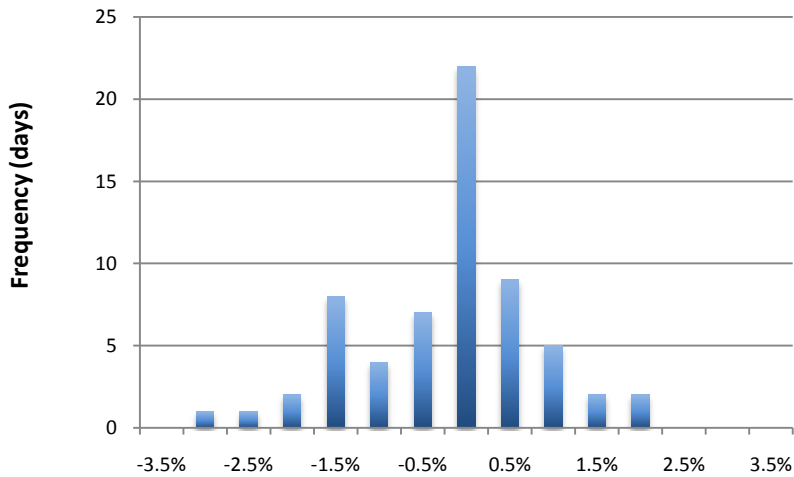
7. Volatility Futures Term Structures



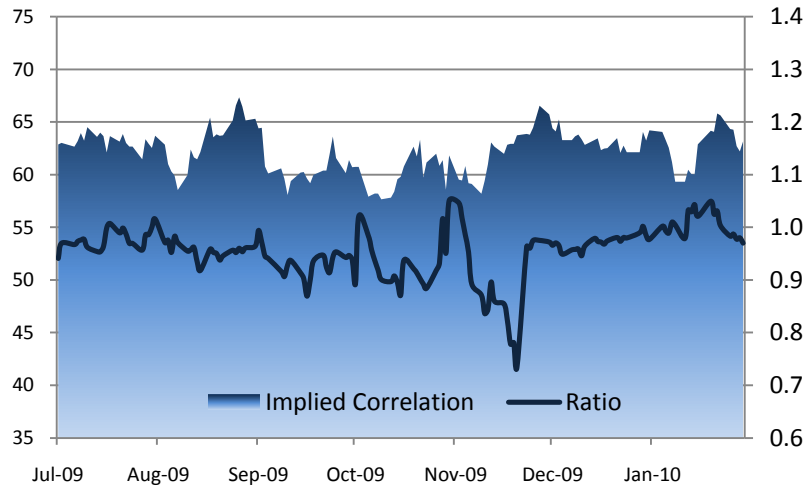
8. VIX Premium Ratio



9. S&P 500 Daily Return Distrib. (3 mo)

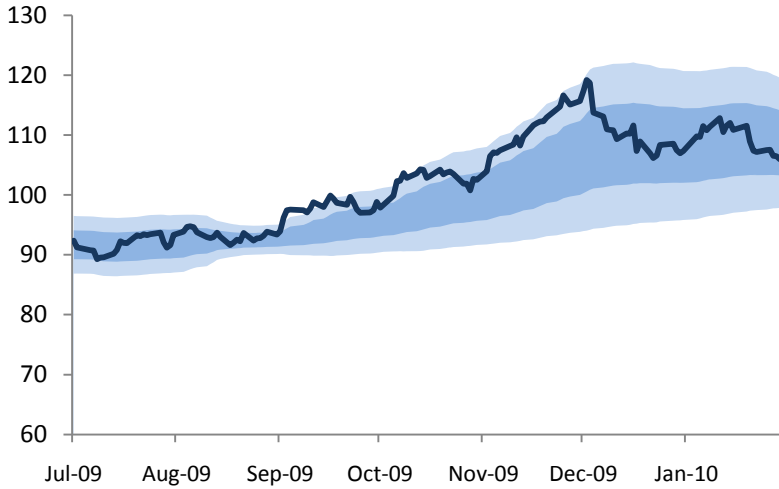


10. S&P 500 Implied Correlation Index

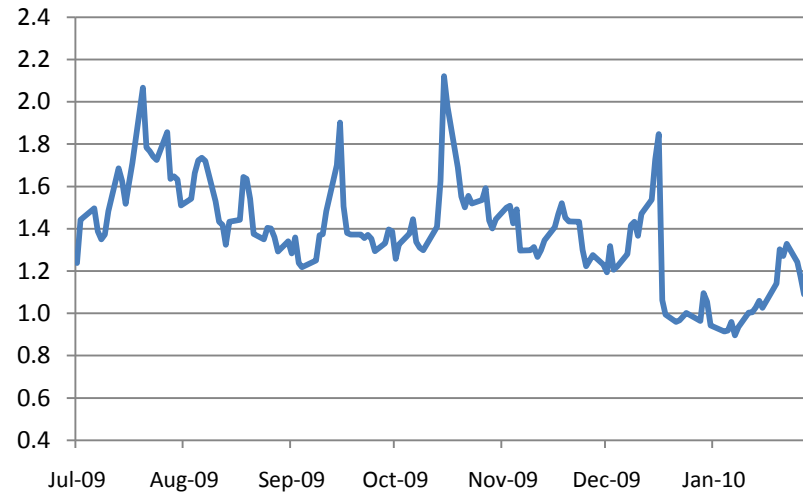


2/1/2010
 Volatility Tracker

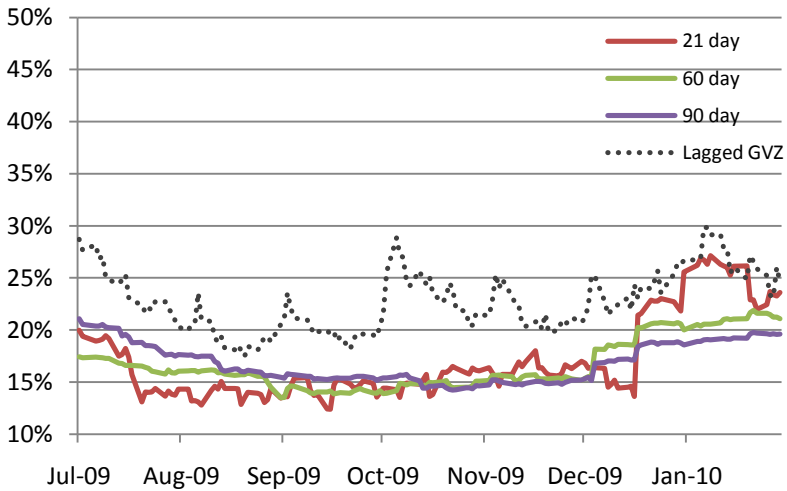
11. Gold Price and Bollinger Bands (GLD)



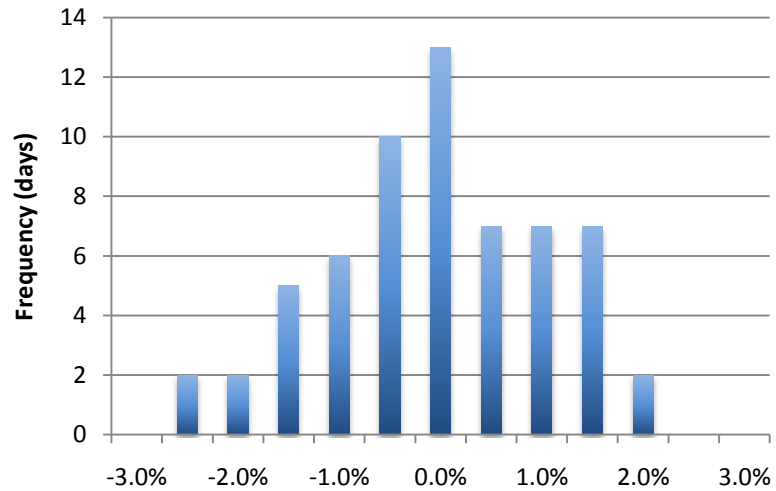
13. Gold Implied/Realized Volatility Ratio



12. Gold Implied and Realized Volatility

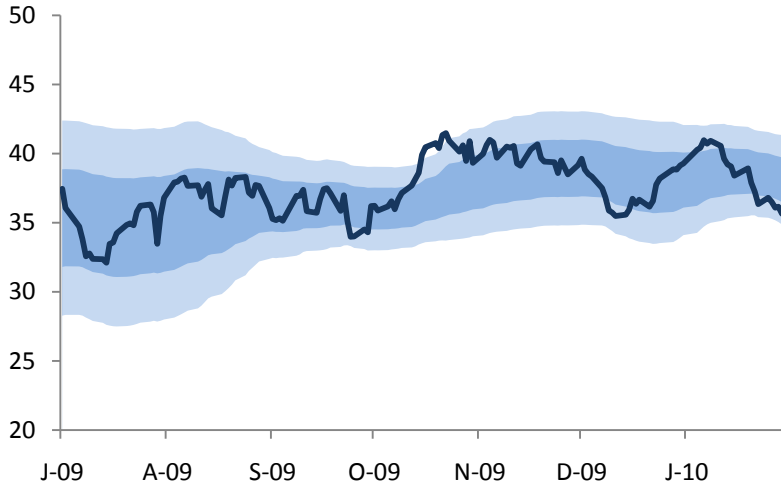


14. Gold Daily Return Distribution (3 month)

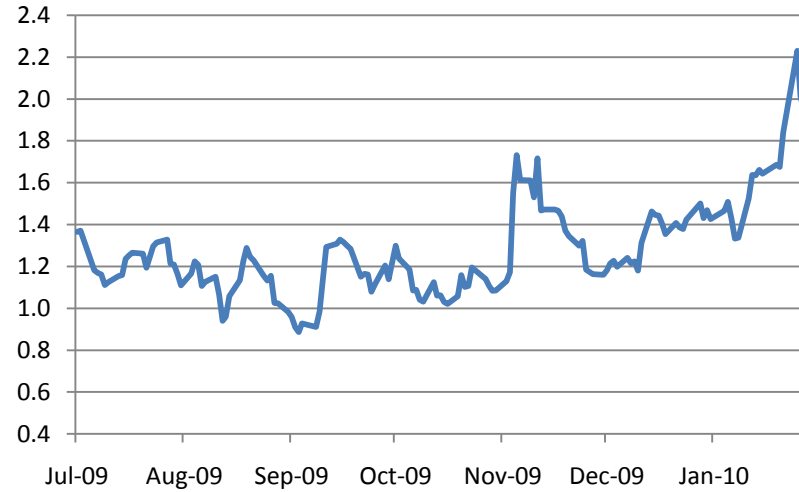


2/1/2010
 Volatility Tracker

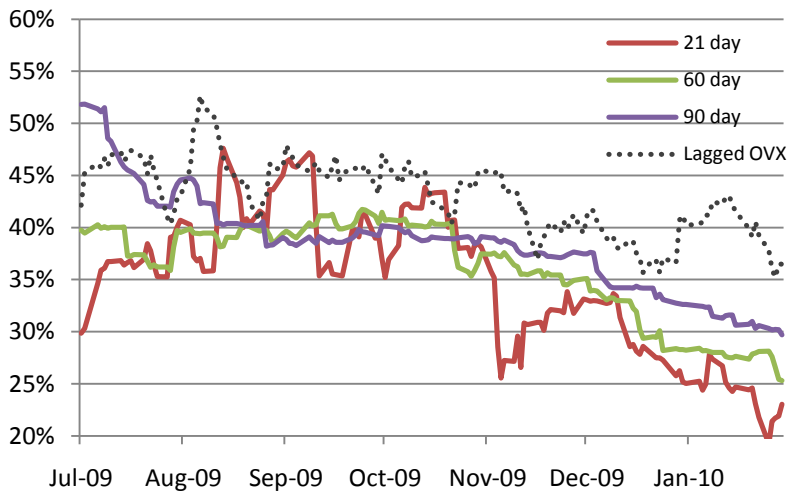
15. Oil Price and Bollinger Bands (USO)



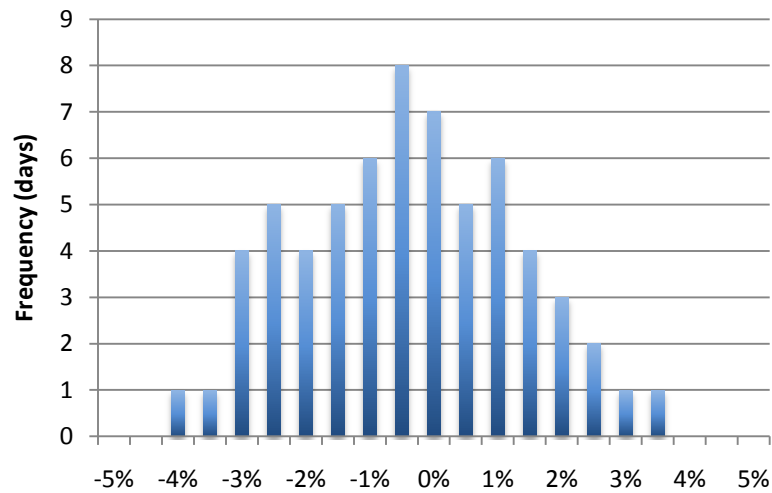
17. Oil Implied/Realized Volatility Ratio



16. Oil Implied and Realized Volatility

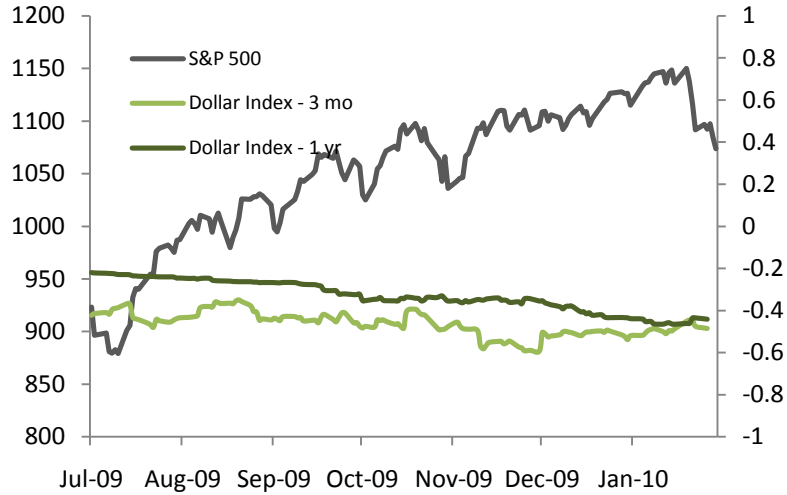


18. Oil Daily Return Distribution (3 month)

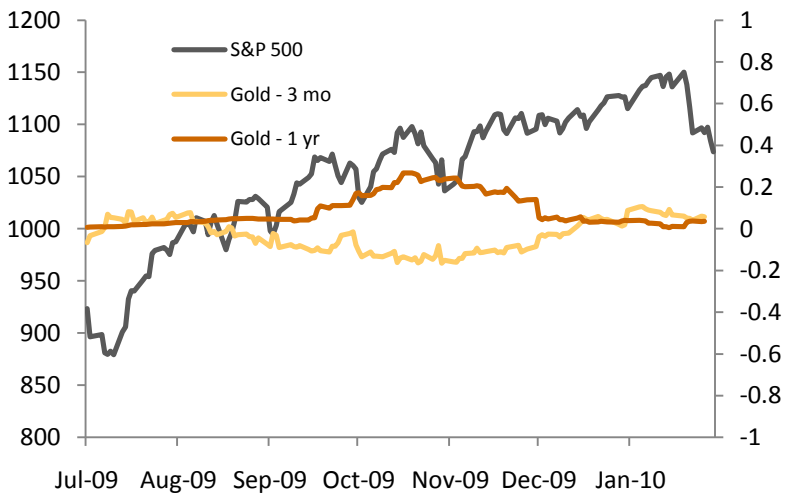


2/1/2010
 Volatility Tracker

19. S&P 500 / US Dollar Index Rolling Correlation



20. S&P 500 / Gold (GLD) Rolling Correlation



- 1. Comment.** Highlights items of note in the data below along with our short-term volatility bias and any trading theses. The Expected Daily Move table displays the de-annualized price and percentage change in each underlying asset as implied by its volatility index, within one standard deviation. The Forward Bias table displays my bias for the movement of the price and implied volatility of several assets for the coming week.
- 2. Weekly Change.** Tracks the weekly percentage change in the assets listed and in their implied volatility indexes.
- 3. Implied Volatility Indexes.** A one year chart of the implied volatility indexes for the S&P 500, gold, oil, and USD/EUR. Indexes for the Nasdaq 100 and Russell 2000 are omitted because of their tight correlation with VIX.
- 4. S&P 500 Price and Bollinger Bands.** Tracks daily closing prices in SPX with an overlay of one and two standard deviation 50-day bands.
- 5. S&P 500 Implied and Realized Volatility.** Tracks the 21-, 60-, and 90-day realized (or "historical") volatility of the index and the 21-day lagged CBOE Implied Volatility Index ("VIX"). Realized volatility is displayed as the annualized standard deviation of lognormal returns over the period specified, and may be thought of as a backward-looking measurement of price behavior. Implied volatility is the annualized standard deviation of returns implied by option prices, and may be thought of as a forward-looking measurement of expected price behavior.
- 6. S&P 500 Implied/Realized Volatility Ratio.** Tracks the ratio of 21-day lagged implied volatility (IV) to 21-day realized volatility (RV). This ratio asks how well IV from one month ago predicted the RV over the next 21 trading days (roughly, 30 calendar days). When IV correctly anticipates RV over the period, the ratio will hover near 1; we regard the area near 0.9 – 1.2 as normal, given the persistence of a volatility risk premium in equity market derivatives. A ratio less (greater) than 1 indicates that the price behavior of the underlying asset was more (less) volatile than anticipated.
- 7. Volatility Futures Term Structure.** Tracks the Friday closing prices of the VIX Futures for the two weeks prior, along with the spot levels for reference.
- 8. VIX Premium Ratio.** Tracks the ratio of rolling three-month (VXV) to one-month (VIX) implied volatility. Periods in which one-month readings persist at an extreme premium or discount to three-month levels have tended to coincide with major market moves.
- 9. S&P 500 Daily Return Distribution (3 month).** Histogram plotting the frequency of daily percentage returns over the prior 63 trading days.
- 10. S&P 500 Implied Correlation Index.** Reflects the market-capitalization weighted average correlation of the 50 largest components of the S&P 500; dark blue line plots the ratio of the short and long term indexes.
- 11. Gold Price and Bollinger Bands.** Tracks daily closing prices in GLD with an overlay of one and two standard deviation 50-day bands.
- 12. Gold Implied and Realized Volatility.** Tracks the 21-, 60-, and 90-day realized (or "historical") volatility of the ETF and the 21-day lagged CBOE Gold Volatility Index ("GVZ").
- 13. Gold Implied/Realized Volatility Ratio.** See #6 above; given the novelty of the VIX-style gold volatility index (GVZ) and the characteristics of the underlying, we do not yet have a range we regard as normal.
- 14. Gold Daily Return Distribution (3 month).** See #9 above.
- 15-18. Oil charts correspond to 11-14 above.**
- 19-20. Rolling Correlation.** 3-month and one year rolling correlations for price changes in the S&P 500 / US Dollar Index and S&P 500 / Gold (GLD).



2/1/2010
Volatility Tracker

Jared Woodard
Condor Options Research
<http://www.condoroptions.com>
jared@condoroptions.com
(212) 203-0693

Services Offered

Condor Options newsletter (iron condors)	http://www.condoroptions.com
Calendar Options newsletter (calendar spreads)	http://www.condoroptions.com
Managed Accounts	http://www.clinamengroup.com
Private Consultations	(212) 203-0693

Contact Information

Condor Options
P.O. Box 4668 #73662
New York, NY 10163-4668
United States
admin@condoroptions.com
(212) 203-0693

Jared Woodard, Principal
jared@condoroptions.com

Disclaimer

Although the information and data provided herein have been obtained from sources Condor Options believes to be reliable, their accuracy and completeness cannot be guaranteed. Conditions on which this report is based may change at any time, and opinions reflected in this report are subject to change without notice. This report is for informational purposes only and should not be construed as an offer to sell or a solicitation to buy any security. Futures and options involve substantial risk and are not suitable for all investors. The value of futures and options may fluctuate and, as a result, investors may lose more than their original investment. No guarantee of any kind is offered or implied by any content in this report, including where projections of future conditions are attempted. The Options Clearing Corp. ("OCC") Option Disclosure Document should be carefully read before investing. A copy may be obtained from the OCC website: <http://www.optionsclearing.com/>.